



## VTL-300/MW-POEB

Article-No.: 79705

Weatherproof Housing, 300mm,  
Wall Bracket, Heater, Fan,  
12V, High PoE

### Mainfeatures

Network camera weatherprotection  
Integrated PoE splitter (12VDC/1.75A resilient)  
Insulated camera mounting  
Integrated wall bracket  
Thermostatically controlled window heater & blower  
Colour: RAL9002

Humidity protected cable feed-through  
Fold-down housing body  
Housing body length: 300mm  
Cable entry through the wall bracket  
Protection rating: IP54  
Accessory: High PoE injector

### Specifications

Series	eneo VTL
Maximum installation length	240
Housing length (L)	300mm
Max. camera size (LxWxH)	180x105x86mm
Clear Shield	no
Window heater	yes
Window heater	12V / 7W (PTC)
Blower	yes
Blower	12V / 1W (PTC)
Wiper	no
Supply voltage	PoE
Power over Ethernet	Built-in HiPoE Splitter with internal wiring
Sunshield	yes
Hidden cable management	yes
Cable entry	Through the wall bracket
Cable connection	RJ-45

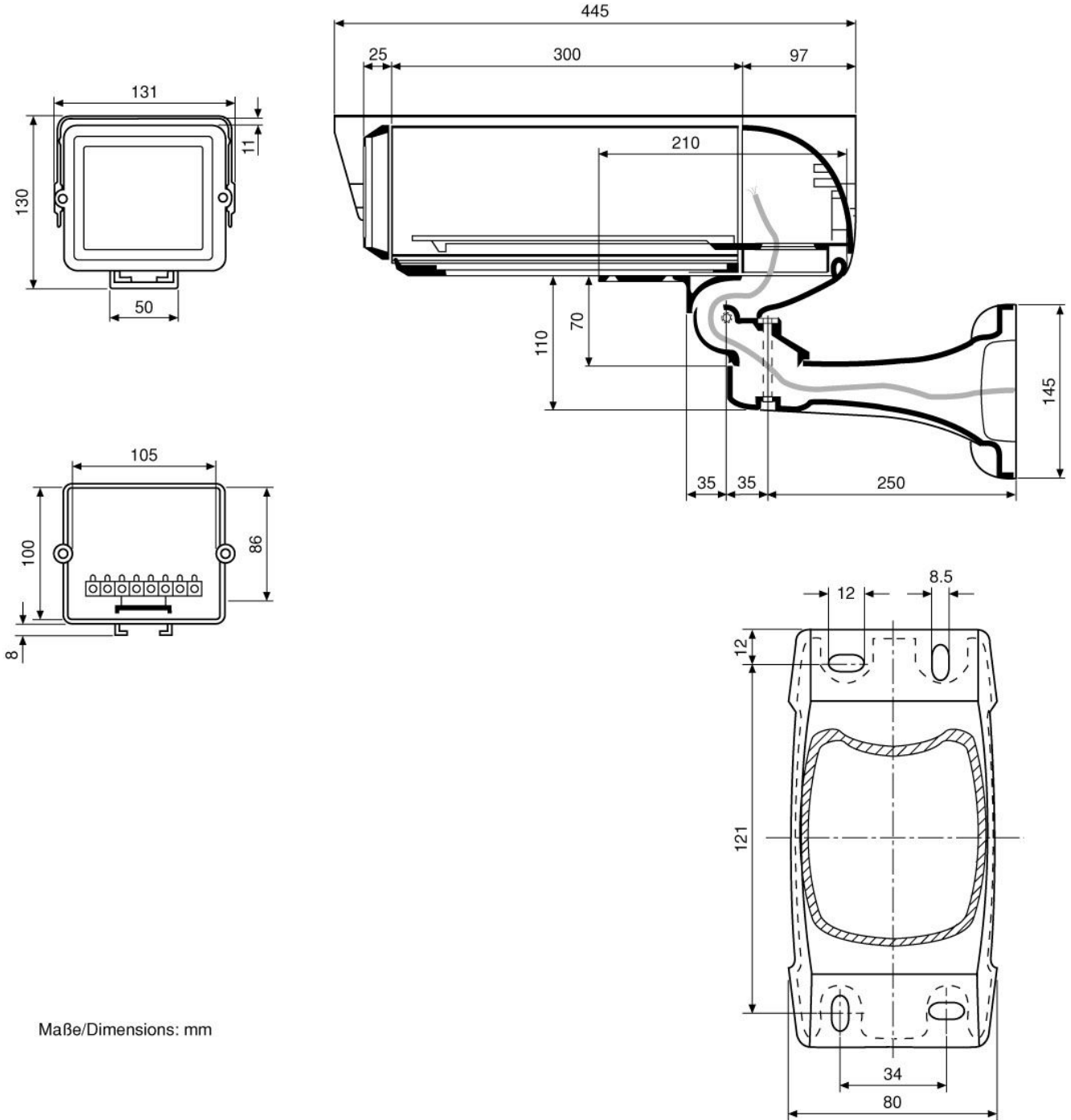
## Specifications (continued)

Integrated wall mount	yes
Protection rating	IP54
Housing	outdoor
Housing material	aluminium
Colour (housing)	RAL9002
Temperature range	-20°C ~ +50°C
Dimensions (HxWxD)	see drawing
Weight	4.0kg
Remarks	The specified temperature range refers to the housing only. The usable temperature range for the entire combination, indoors and outdoors, depends strongly on the expected ambient temperature and the type of camera used.
Certificates	CE

## Optional Accessories

Image	Artikel-Nr. / Typ	Description
	PM-6D	Pole Mount Adapter for 2 Wall Mounts, (50-140mm Pole), RAL9002
	PM-6S	Pole Mount Adapter for 1 Wall Mount, (50-140mm Pole), RAL9002
	CMA-2	Corner Mount Adapter for Wall Brackets WD-5, WD-7, VTL-WW, VHK-WW, RAL9002
	POE INJECTOR-01	Single Channel High PoE Injector, 230VAC
	SU-6	Camera Height Adjustment Kit for VHK and EHL Housings (3 Diff. Slides and Screws)

## Technical Drawing



Maße/Dimensions: mm



Your partner for eneo products:

