



VKCD-1324/IR

Article-No.: 92169

1/3" Dome, Fixed, Day&Night,
Pixim, clear, 2.8-10mm,
540TVL, IR LED, 12/24V

Main features

Digital Pixel System (DPS)
Built-in lens F1.2/2.8-10mm with DC iris control
Removable IR cut filter
Adjustable low speed Shutter (DSS)
IR illumination by 35 integral 850nm LEDs
Weatherproof camera / Protection rating: IP66

Wide dynamic range: 102dB, 120dB max.
Sensitivity of 1.7Lux (F1.2 / colour)
Digital noise reduction (DNR)
Automatic white balance (ATW)
Surface mounting / Clear bubble
Supply voltage: 12VDC/24VAC

Specifications

System	day&night
Video standard	PAL/NTSC
Sensor size	1/3"
Imager	DPS (Pixim)
Active picture elements	400,000, (H) 720 x (V) 540 (eff.)
Horizontal resolution	540 TVL
Synchronization	Internal/Line-lock
Signal-to-noise ratio	48dB (AGC OFF)
Sensitivity (at 50% video signal)	1,4 Lux
Sensitivity (at 50% video signal)	(colour), 0.38Lux (B&W) at F1.2 (measured)
Low speed shutter	yes
Low speed shutter	2 ~ 32 fps.
Digital Noise Reduction (DNR)	yes
Digital Noise Reduction (DNR)	ON/OFF switchable
Backlight compensation	BLC

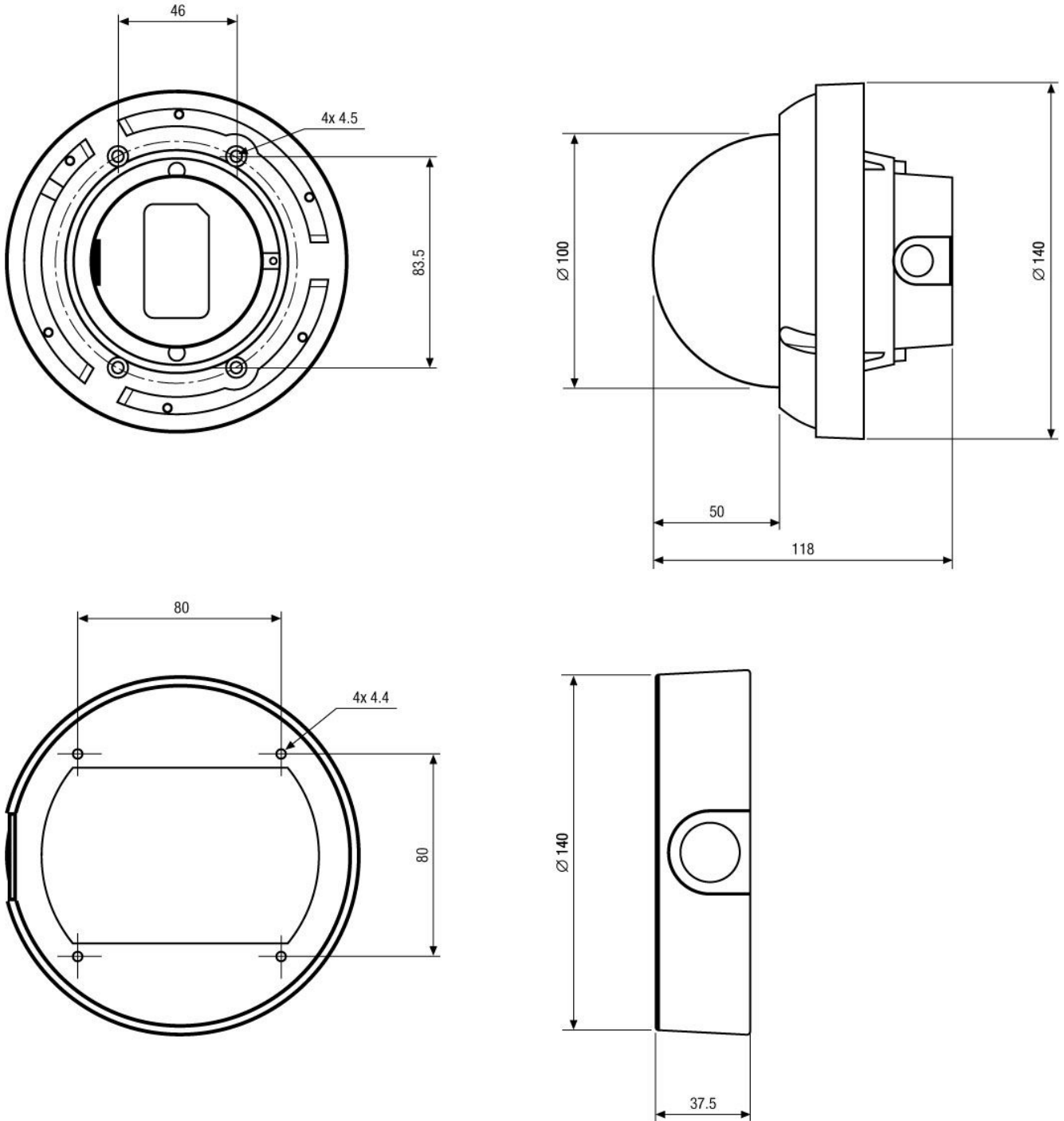
Specifications (continued)

Backlight compensation	4 presets: low/middle/high/custom (user adjustment) / BLC: Center area / upper 1/3, middle 1/3, lower 1/3
Wide Dynamic Range (WDR)	yes
White balance	automatic and manually (ATW/AWB)
Aperture Correction (APC)	horizontal and vertical
Flickerless function	ON/OFF switchable
IR cut filter	switchable
Day/Night switching	Automatic switch to b&w signal output at totally dark environment conditions
OSD function control	Preset, Exposure, D&N, Picture Control, Lens Select (manual/DC), Mirror function (H+V), Synchronization, Shutter mode
Activity detection	no
Digital zoom	no
Auto exposure	Automatic/Manual Shutter/AGC
Lens type	varifocal
Focal length	2,8 mm - 10 mm
Horizontal angle of view	82° - 27°
MOD (Minimum object distance)	0,1 m
Video outputs	composite (CVBS)
Alarm inputs	no
Alarm outputs	no
e-PTZ support	no
Rotation range	359°
Illumination	infrared, infrared
Illumination	35 LEDs 850nm. Integrated light sensor for On/Off switching of the illumination
Serial interfaces	no
Housing	outdoor
Housing	Metal
Housing material	aluminium
Colour (bubble)	clear
Colour (housing)	Pantone Warm Gray 1C
Heater	no
Mounting	wall mount, flush mount, ceiling mount
Supply voltage	12VDC, 24VAC
Supply voltage	10 - 30VDC, 15 - 29VAC
Power consumption	10W max.
Temperature range (operation)	-10°C - +50°C
Protection rating	IP66
Vandalism resistant	yes
Dimensions (HxWxD)	see drawing
Weight	approx. 1.0kg
Parts supplied	Mounting kit, Torx wrench key, Manual
Certificates	CE
Special features	electronic focus help function enables an exact focus adjustment for colour- and black & white mode without the support of a separate ND- or Grey- filter.

Optional Accessories

Image	Artikel-Nr. / Typ	Description
	IRCAM/WB2	Wall Mount Kit for VKCD-1322 and VKCD-1324/IR
	IRCAM/CB1	Ceiling Mount Kit for VKCD-1322 and VKC-1324/IR
	VT-PS12DCDT1	PSU 12VDC/1.0A, Regulated, Desktop Version, 1.8m Cables each w. open ends
	VT-PS12DC-7	Plugable PSU w. Cont. & UK Mains plug-in 100-240VAC/12VDC-1.25A, Regulated
	NE-132/AC24V	Power Supply Unit 230VAC/24VAC (1.0A)
	3/4" - M25X1.5	Thread Adapter 3/4" - Conduit Connection M25x1.5mm for Dome Surface Mount Housing
	VKCD-1324/IR-MC	Spot Monitor Cable for VKCD-1324/IR

Technical Drawing



Maße/Dimensions: mm



Your partner for eneo products:

